



July 26-27, 2024, McKee, KY

# Service Route Book

Eastern Region ARA Championship Event



# **EMERGENCY CONTACT NUMBERS**

## ***911 – Emergencies in McKee and Jackson, Rockcastle, Lee & Owsley Counties***

<b><u>Entity:</u></b>	<b><u>Phone Number:</u></b>	<b><u>Company or Jurisdiction</u></b>
<b>Emergency Medical Services</b>	<b>911 or (606) 287-7782</b>	<b>Jackson County EMS</b>
<b>911 Dispatch</b>	<b>911 or (606) 287-9979</b>	<b>Jackson Co. Dispatch</b>
<b>Medical Helicopter</b>	<b>Dispatched at request of Jurisdictional EMS/FD</b>	
<b>Jackson County Sheriff</b>	<b>911 or (606) 287-9979</b>	<b>Jackson County</b>
<b>Kentucky State Police</b>	<b>911 or (859) 623-2404</b>	
<b>City of McKee PD</b>	<b>911 or (606) 287-9979</b>	<b>Jackson County</b>
<b>U.S. Forest Service</b>		
<b>Fire Departments</b>	<b>Dial 911</b>	<b>McKee FD, Gray Hawk FD, Pond Creek FD, Sand Gap FD</b>
For the entire rally area	All Fire Departments are dispatched by 911	
<b><u>Hospitals:</u></b>		
<b>University of Kentucky Level 1 Trauma Center</b>	<b>(859) 323-5901</b>	1000 S Limestone Lexington, KY 40536
<b>Saint Joseph London Level 4 Trauma Center</b>	<b>(606) 330-6000</b>	1001 St Joseph Ln London, KY
<b>Saint Joe Berea Level 4 Trauma Center</b>	<b>(859) 986-3151</b>	305 Estil Street Berea, KY 40403
<b>BFR Chief of Emergency Services Jamie Strong</b>	<b>(606) 493-8443</b>	<b>Boone Forest Rally</b>
<b>Towing</b> Charlie Wright 606-438-1262		

\* The ambulance service in the area is advanced life support. The ambulance being employed by BFR from the private service will be a basic life support crew.

## 2024 Boone Forest Rally

### Scrutineering and Service information

#### **SCRUTINEERING INFO:**

Scrutineering Location is in the PRTC warehouse, 240 McCammon Ridge Rd, McKee, KY.

GPS: 37.4272°, -83.9854°. Competitors have been assigned 'windows' for their tech times.

**We ask that you unload the cars in the High School area; then park the trailer and drive the car to Tech.**

From the highschool, proceed down the hill.

At the intersection with Rt 421, go straight.

The Tech area is on the right in 0.3 mi.

#### **SERVICE INFO:**

The Service Park will be open from 0900 Thursday July 25 to 2300 Saturday July 27. DO NOT ARRIVE EARLY.

See the map of the High School area. A marshal will be available there to help you get situated.

An exact location diagram will be available on Sportity July 21.

Service spaces will be 20' x 50', with larger spaces available as needed and paid for.

**Starting FRIDAY, All traffic must drive in the High School area in a clockwise direction.**

All service personnel must check in at the rally's registration area at McKee High School according to the schedule in the Supplementary Regulations modified by Bulletin 1. See map of H.S. for Check-in location.

Everyone must have completed the ARA Speed Waiver and have an ARA Crew License available at: <http://rallylicense.com> to touch any rally vehicle in the service area. These people will be identified by wrist bands received at check-in.

All rally cars must refuel in the Fuel Depot per ARA RCRs Section 5.8 or at a commercial gas station along the route. The Fuel Depot will be located in the rear of the High School area.

There must be a tarp under the rally car during service to catch fluid spills.

**Rally cars DNFinng on the first run of a stage will be left in place until after the second running.**

**Service Contact:** Ron Chester (606.261.0416)

#### **SERVICE ROUTES:**

Since both service areas are at McKee High School movements should be limited. The following movements are authorized (and by inference other travel routes are not):

Travel to and from B and B's and travel within McKee town.

Travel on any road before 1 pm and after 8 pm.

Travel on routes listed in this service booklet.

#### **SPECTATING:**

On FRIDAY you may spectate in the middle of SS1 Turkey Foot. First car is due at 1417.

See info in this booklet.

On SATURDAY you may spectate in the middle of SS7 Poplar Gap 1. First car is due at 1420.

You may also spectate at SS 11 S. Tree Tower. First car is due at 1845. See info in this booklet.

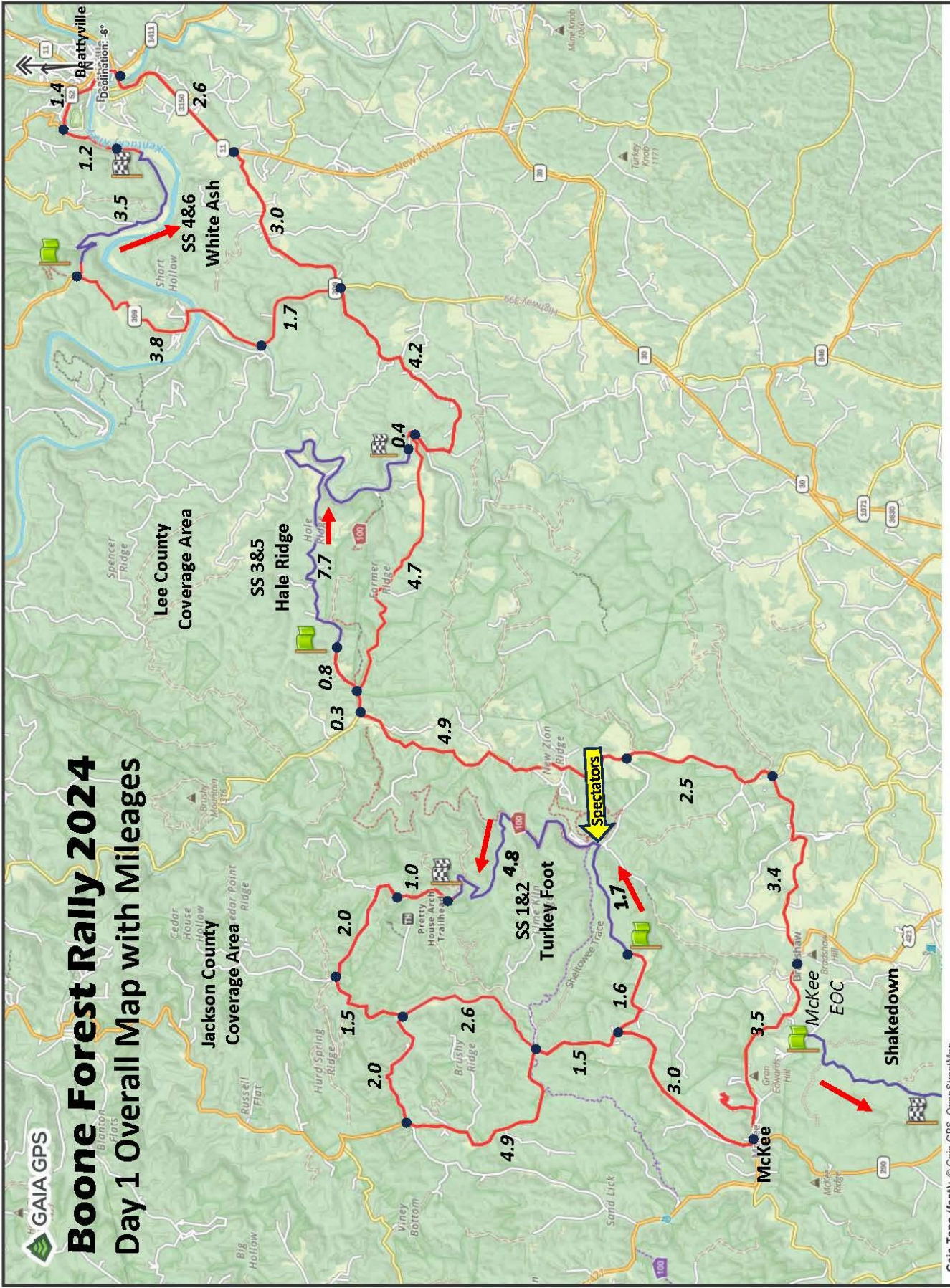
# 2024 Stage Itinerary FINAL

7.5.2024

Friday							
TC	Location	SS Mi.	Transit Mi.	Total Mi.	Lateness	Transit time	First car due
0	MTC 1 OUT - McKee Expose						14:00
<b>RZ 1</b>	Distance to next refuel:	13.02	30.59	43.61			
1	Transit to SS1		4.70	4.70		0:14	14:14
<b>SS 1</b>	<b>Turkey Foot 1</b>	<b>6.51</b>			0:11		<b>14:17</b>
2	Transit to SS2		13.10	19.61		0:40	15:08
<b>SS 2</b>	<b>Turkey Foot 2</b>	<b>6.51</b>			0:11		<b>15:17</b>
<b>TC 2A</b>	Transit to RGC 1		12.79	19.30		0:32	<b>16:00</b>
<b>TC 2B</b>	RGC 1 OUT/ Service 1 IN					0:15	16:15
	Service 1					<b>0:45</b>	
<b>TC 2C</b>	Service 1 OUT	-	-	-		-	17:00
<b>RZ 2</b>	Refuel Distance to Fri Finish:	21.96	56.37	78.33			
3	Transit to SS3		15.65	15.65		0:32	17:32
<b>SS 3</b>	<b>Hale Ridge 1</b>	<b>7.74</b>			0:14		<b>17:35</b>
4	Transit to SS4		10.30	18.04		0:20	18:09
<b>SS 4</b>	<b>White Ash</b>	<b>3.24</b>			0:06		<b>18:12</b>
5	Transit to SS5		17.92	21.16		0:35	18:53
<b>SS 5</b>	<b>Hale Ridge 2</b>	<b>7.74</b>			0:14		<b>18:56</b>
6	Transit to SS6		10.30	18.02		0:20	19:30
<b>SS 6</b>	<b>White Ash 2</b>	<b>3.24</b>			0:06		<b>19:33</b>
<b>TC 6A</b>	MTC 2 - Beattyville Expose		2.20	5.52		0:12	19:51
	<b>Day totals</b>	<b>34.98</b>	<b>84.76</b>	<b>119.74</b>			
Saturday							
	MTC 3 - Livingston Expose						14:00
<b>RZ 3</b>	Distance to next refuel:	30.38	52.58	82.96			
7	Transit to SS7		6.20	6.20		0:15	14:15
<b>SS 7</b>	<b>Poplar Gap 1</b>	<b>7.82</b>			0:14		<b>14:18</b>
8	Transit to SS8		2.14	9.96		0:10	14:42
<b>SS 8</b>	<b>New Hope Tower 1</b>	<b>7.37</b>			0:14		<b>14:45</b>
9	Transit to SS9		20.95	28.32		0:45	15:44
<b>SS 9</b>	<b>Poplar Gap 2</b>	<b>7.82</b>			0:14		<b>15:47</b>
10	Transit to SS10		2.14	9.96		0:10	16:11
<b>SS 10</b>	<b>New Hope Tower 2</b>	<b>7.37</b>			0:14		<b>16:14</b>
<b>TC 10A</b>	Transit to RGC 2		21.15	28.52		0:42	<b>17:10</b>
<b>TC 10B</b>	RGC 2 OUT/ Service 2 IN					0:15	17:25
	Service 2					<b>0:45</b>	
<b>TC 10C</b>	Service 2 OUT	-	-	-		-	18:10
<b>RZ 4</b>	Refuel Distance to Finish:	8.79	31.75	40.54			
11	Transit to SS11		14.27	14.27		0:32	18:42
<b>SS 11</b>	<b>S Tree Tower 1</b>	<b>5.64</b>			0:10		<b>18:45</b>
12	Transit to SS12		15.16	20.80		0:30	19:25
<b>SS 12</b>	<b>Mill Creek</b>	<b>3.15</b>			0:06		<b>19:28</b>
<b>TC 12A</b>	MTC 4 - McKee		2.32	5.47		0:12	19:46
	<b>Day totals</b>	<b>39.17</b>	<b>84.33</b>	<b>123.50</b>			

Section 1  
Leg 1  
Section 2  
Section 3  
Leg 2  
Section 4



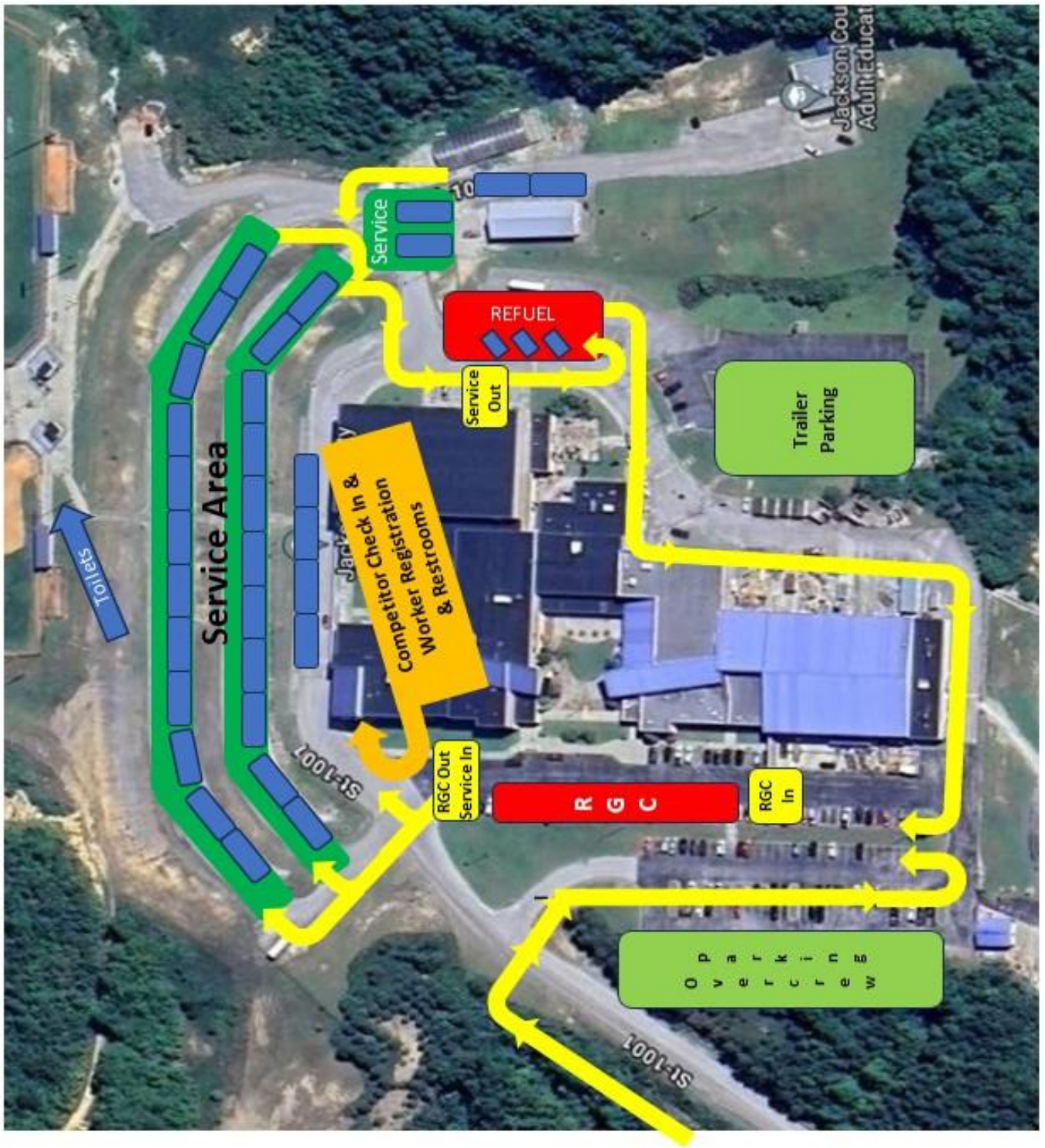








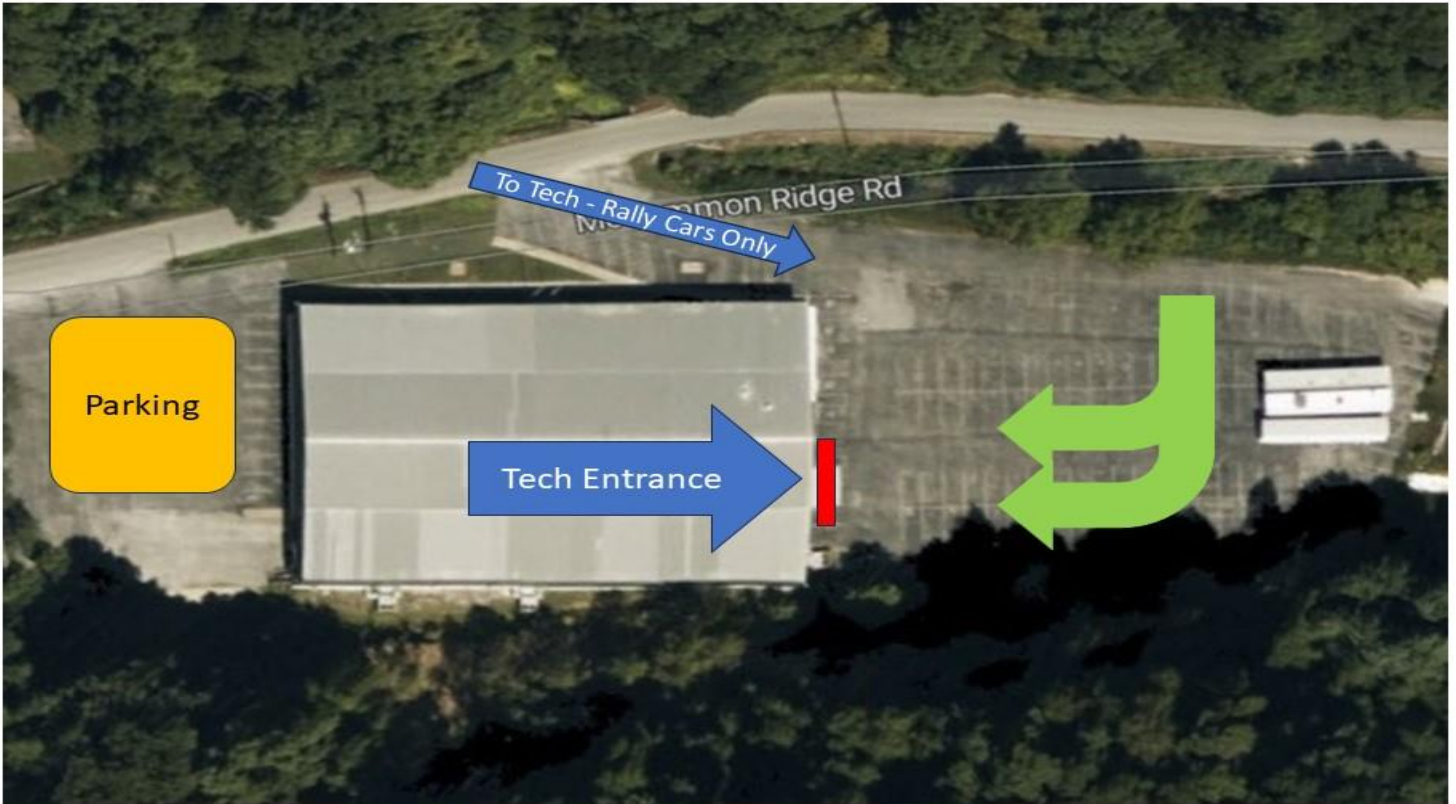
# BFR 2024 High School Area Layout



**Tech location: PRTC warehouse, 240  
McCammon Ridge Rd, McKee, KY**

**GPS: 37° 25.650 N 83° 59.120 W**

**BFR 2024 Tech Location**



**BFR '24 Scrutineering Appointment.....7/12**

Time Slot	Car1 #	Car2 #	Car3 #	Car4 #	Car5 #
7/25/24 14:00	255 Klein	721 Martel	488 Hart	41 Sladek	
7/25/24 15:00					
7/25/24 16:00		107 Healy	720 Pedersen		
7/25/24 17:00	990 Burke	518 Williamson			
7/25/24 18:00					
7/25/24 19:00	986 Nonack				
7/26/24 8:00					
7/26/24 9:00					
7/26/24 10:00					



**SPECTATOR ROUTE FRIDAY (No trailers allowed)**

**FRIDAY**

**From Service to SS1.....First car due: 1417.**

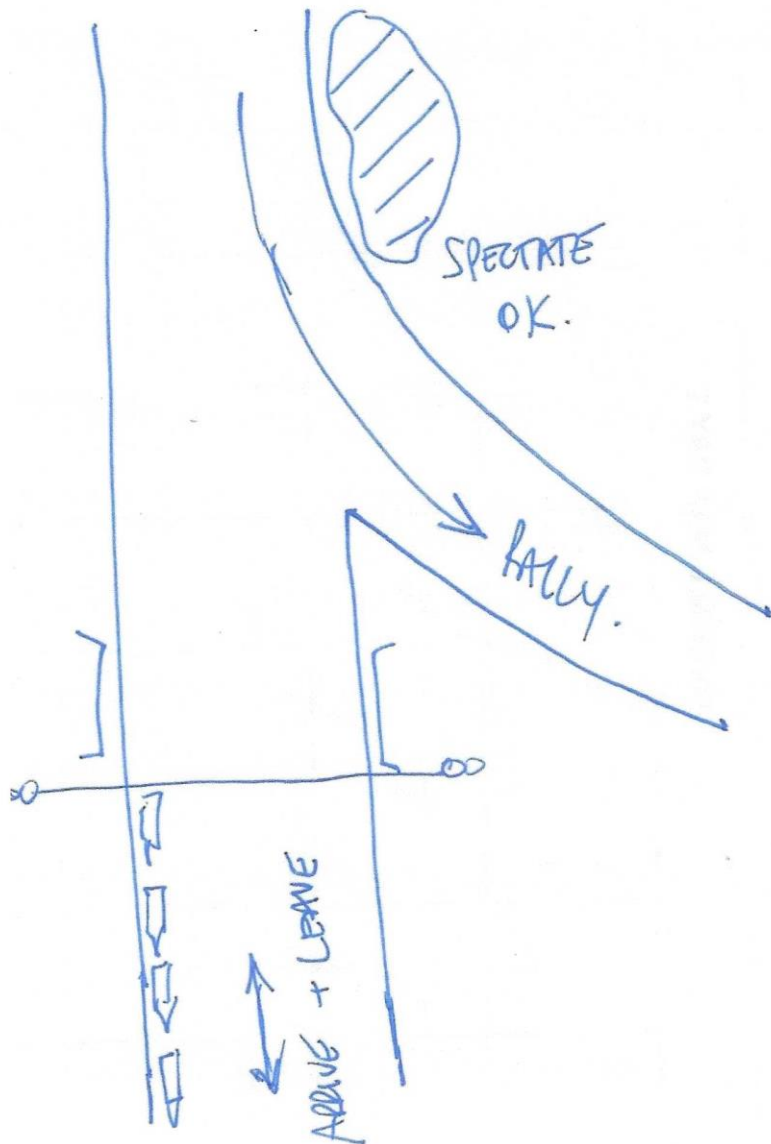
**THIS SPECTATOR AREA INVOLVES LEAVING THE MCKEE AREA WHILE YOUR CAR IS IN PARC EXPOSE.**

**THE STAGE IS RUN TWICE, BUT YOU CAN ONLY VIEW THE FIRST RUNNING IN ORDER TO GET BACK TO SERVICE BEFORE YOUR CAR ARRIVES AFTER THE SECOND RUNNING OF THE STAGE**

I suggest you leave about 1300. Drive to the spectator area, turn around and park. Walk to the intersection and follow the Marshals instructions to where you can view the stage (just across the road).

Watch the cars but as the last few cars come past be ready to leave immediately when the sweep car comes past. Work with the Stage Marshals to make this happen. The Course Open car will be right behind him and will close the stage again minutes later....

Total	Interval	
		Leave service proceeding down the hill
0.0		STOP. Left on Rt 241.
2.9	2.9	Left on Rt 587.
6.3	3.4	STOP. Left to follow RT 587
8.7	2.4	Turn Left toward Recreation Area. (Turkey Foot).
10.5	1.8	Turn around and park on the RIGHT side only of the road (as you will leave).



## MCKEE TO BEATTYVILLE - END OF DAY FRIDAY

On Friday the rally cars will finish and go into a Parc Expose in Beattyville, KY.

The Expose will be from first car arrival at approx.1950 until all cars are released at 2100.

There is ample parking for cars, vans and trailers in various areas on the entry to the town.

However you may decide to leave your trailer in the Service area and just take a car over to Beattyville. Or you may decide not to go at all. Your decision. From McKee it is 30 miles to Beattyville.

Miles		Leave service proceeding down the hill
0.0		STOP. Left on Rt 241.
2.9	2.9	Left on Rt 587.
6.2	3.3	STOP. Left to follow RT 587
8.7	2.5	Pass Spectator entrance on left
13.6	4.9	STOP. Right to follow Rt 587
13.9	0.3	Keep Right on Rt 587 and pass entrance to SS 3/5 on left.
18.6	4.7	Pass finish of SS 3/5 on left.
22.7	4.1	Left to follow Rt 587
22.8	0.1	STOP. Right to follow Rt 587.
25.8	3.0	STOP. Left on Rt 11.
28.4	2.6	Left at traffic signal onto Broadway.
28.6	0.2	Left at traffic signal into downtown Beattyville. Trailer parking suggested as shown.

### BFR 2024 Beattyville Parc Expose & Trailer Parking Layout





## TO RETURN FROM BEATTYVILLE TO MCKEE AREA.

0.0		Leave Park Expose.
0.2	0.2	Right at traffic light. Broadway
0.5	0.3	Right at traffic light. Rt 11.
3.1	2.6	Right on Rt 587
6.0	2.9	Left to follow Rt 587
6.1	0.1	Right to follow Rt 587.
15.3	9.2	Left to follow Rt 587
22.6	7.3	STOP. Right to follow Rt 587
26.0	3.4	STOP. Right onto Rt 421
28.9	2.9	Right at Citizens Bank toward High School.

## START OF DAY SATURDAY AND SPECTATE

Saturday morning competitors have the option of doing Recce for Day 2; some may also decide to work on their cars.

In any case, the RESTART SATURDAY noon (actually 1 pm Parc Expose) is from the center of Livingston (see map Day 2).

There are 3 different routes suggested: Rt 89 (not advised for trucks and trailers), Rts 421 and 1955 or I-75 and Rt 25. Whatever route you take, there is a meeting place for rally cars, recce cars and trailers in the White Star lot.

WHITE STAR LOT GPS: 37° 18.145 84° 13,649.

From here you can drive your rally car to the Parc Expose in the center of Livingston (0.8 mi..see map below).



Mileage		To return to McKee we suggest the following route:
0		Turn right out of the White Star lot (Rt 25 south)
0.8	0.8	In the center of Livingston, turn Left; and then on 200 yards turn Left again to follow Rt 1955 north.
7.6	6.8	Intersection of Rt 1955 north and Rt 1004 (Big Cave Rd) on the left.
		<i>Turn Left to spectate at SS 7 (trailers not allowed):</i>
		<i>In 1.8 mi, there is a parking area on the grass on the left. Marshals will direct you. The spectator area is 100 yards ahead. GPS: 37° 22.056 84° 12.695 . First car due: 1420.</i>
		<i>After spectating return to Rt 1955, <b>turn Left</b>.</i>
7.6	0	Intersection of Rt 1955 north and Rt 1004 (Big Cave Rd), Continue heading north on Rt 1955.
11.8	4.2	Turn Right to follow Rt 1955.
19.5	7.7	Turn Right at STOP onto Rt 421. Follow to McKee.
31.5	12	At the traffic light in McKee continue straight.
32.0	0.5	Turn Left at Citizens Bank to go up the hill to the High School and the service area.



**TO SPECTATE AT THE END OF SATURDAY AT SS 11 (trailers not allowed)**

		From High School service, proceed down the hill
0		Turn Right on Rt 421
0.5		Proceed thru center of McKee at traffic light
1.1		Turn Left on Rt 89
4.6		Turn Right toward National Forest (Recreation Area)(Whetstone Rd)
5.9		Park. Spectator area ahead. First Car due: 1845

**THESE ROUTES ARE TO BE USED ONLY WHEN PICKING UP A DISABLED CAR**

<b>FRIDAY</b>		<b>Route: To start of SS 1/2 Turkey Foot</b>
Miles		(NOTE: You must use this route for both travel to and from this stage. The route from the finish is not passable for anything larger than a car.)
		Leave service preceeding down the hill
0.0		STOP. Right on Rt 241.
0.5		Straight thru traffic signal
0.6		Right. (Rt 89 north)
3.5		Acute right toward Recreation Area.
4.0		Left at intersection. Speed Limit 25 to control
5.5		Start control. Follow marshal's directions.
<b>FRIDAY</b>		<b>Route: To start of SS 3/5 Hale Ridge</b>
		Leave service preceeding down the hill
0.0		STOP. Left on Rt 241.
2.9		Left on Rt 587.
6.2		STOP. Left to follow RT 587
8.7		Pass Spectator entrance on left
13.6		STOP. Right to follow Rt 587
13.9		Over crest, Keep Left !!
14.7		Start control, Follow marshal's directions.
<b>FRIDAY</b>		<b>Route: To start of SS 4/6 White Ash</b>
		Leave service preceeding down the hill
0.0		STOP. Left on Rt 241.
2.9		Left on Rt 587.
6.2		STOP. Left to follow RT 587
8.7		Pass Spectator entrance on left
13.6		STOP. Right to follow Rt 587
13.9		Pass entrance to SS 3/5 on left.
18.6		Pass finish of SS 3/5 on left.
22.7		STOP. Left to follow Rt 587
22.8		STOP. Left on Rt 399.
25.8		Bumpy Railway crossing.
28.3		Acute right on gravel !! NARROW and downhill.
28.6		Start control. Follow marshal's directions.



<b>SATURDAY</b>		<b>Route: From Livingston to the start of SS7/9. Poplar Ridge</b>
0.0		From the center of Livingston, Take Rt 25 north.
0.8		Pass White Star lot on the left.
3.8		Turn Right before a concrete store on the left. Mullins Station Rd. (looks like a driveway).
		Follow this road over several railroad tracks. It will turn to gravel.
6.2		Start of stage at an old coal mine area.
<b>SATURDAY</b>		<b>Route: From Livingston to the start of SS8/10. New Hope Tower</b>
0.0		From the center of Livingston, take Rt 1955 north (across the bridge)
6.8		Turn Left on Rt 1004
8.5		Continue on Rt 1004 past the spectator area on SS 7/9.
9.3		Continue on Rt 1004 past stage 7/9 turnoff to the right.
11.2		Turn acute Right on New Hope Tower Rd (uphill turn)
11.5		Pass the junk yard and in 200 yards is the start of SS 8/10.
<b>SATURDAY</b>		<b>Route: From McKee service area to the start of SS 11. S Tree Tower</b>
		Leave service preceeding down the hill
0.0		Right on Rt 421 and follow.
		Go thru McKee
1.1		Pass Rt 89
7.8		Left toward S.Tree Tower.
9.0		<b>!</b> Keep Left at Y. (over crest).
13.0		Left toward Recreation Area.
13.3		Stage start SS 11
<b>SATURDAY</b>		<b>Route: From McKee service area to the finish of SS 12</b>
		Leave service preceeding down the hill
0.0		Straight across main road.
1.5		Keep Right on gravel (Mill Creek Rd).
		Finish ahead 1.2 mi